



Edinburgh 2011 Overview

We're delighted to be returning to the Edinburgh Art Fair after our successful and hugely enjoyable participation last year. Once again we are showing a diverse range of affordable contemporary pieces by established, popular artists.

For Edinburgh 2011, we have a wide array of wonderful, unique **paintings** by nine highly accomplished artists: Janet Rogers, Sally Trueman, Theo Booth, Sue Moffitt, Jeremy Houghton, Peter Kotka, Sally Leggatt, Paul Bursnall and Fleur Burton.

In addition, we are exhibiting work by **sculptor** Christopher Townsend – known in particular for his beautiful wall-mounted metal trees – and **limited edition prints** from a quartet of leading original printmakers: Jane Peart, Diana Ashdown, Trevor Price and Mychael Barratt.

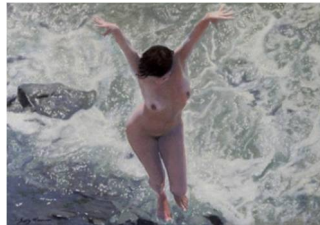
For further information during the Fair, please come and talk to us at **Stand E2**, email us at info@ginnygray.com or call Rob or Ginny Gray on 07884 262641.



Janet Rogers' landscapes and abstract paintings use mixed media, often incorporating gum Arabic and gold or silver leaf. Her style has a timeless quality, influenced by the work of 19th century English painter Samuel Palmer.



Sue Moffitt is a nationally acclaimed painter, principally known for her characterful portrait paintings of cows.



Sally Trueman is noted for her original pastels of sensual, seductive and subtle nudes in water. For the past decade, she has lived in the South of France.



Internationally recognised for his still life oil paintings of fine wines and other subjects, **Peter Kotka** draws his inspiration from 17th century masters such as Nicolas Gillis and Willem Kalf.



The natural spectacle of flamingo flocks with their kaleidoscopic colours, shimmering lines and coalescing shapes are a recurring theme in **Jeremy Houghton's** oil paintings. Jeremy, an official BT Artist for the London 2012 Olympic Games, is showing his work in Edinburgh ahead of an exhibition at Everard Read, Southern Africa's most famous commercial art gallery in 2012 – its centenary year.



Captivating, detailed elegantly composed, **Jane Peart's** copper-plate etchings of animals, buildings and other subjects are much admired. She has exhibited widely and her work features in collections as diverse as The Ashmolean Museum, Oxford and Guy's and St. Thomas' Hospital, London.



Sculptor **Christopher Townsend** is arguably best known for his wall-mounted steel trees that cast intricate bewitching shadows. In addition to the much loved trees, this year we are also showing mixed media wall art pieces by Christopher featuring acrylic paint, sculptural forms, found objects such as sheet music and clever use of texturing. Throughout the artist's work there is a base awareness of, and fascination with, line, form and balance.



Barcelona-based artist **Theo Booth** is renowned for the playful and distinctive style of his internationally collected figurative paintings. He takes inspiration from Art Deco, Cubism, Tamara de Lempicka and 1950's Americana.



Trevor Price's original prints are found in many collections including the Bank of England and Yale University.



The natural world is the main subject for **Diana Ashdown's** refined yet strongly textured intaglio prints which are produced using an H. Rochat floor press.



Paul Bursnall is a popular naïve artist renowned for his paintings of harbour scenes and terraced houses rendered in appealing strong blocks of colour with heavy outlines. Among Paul's latest work are large scale statement pieces.



A Toronto-born artist, now living in London, **Mychael Barratt** makes detailed, often humorous limited edition prints which address themes as diverse as city life, Shakespeare and artists' pets rendered in a pastiche style that pays homage to the genius of the artistic masters! Author of a printmaking handbook published by A&C Black, he recently completed a major mural on the 2012 Olympic route in central London.